



## 2012 Verve Cup Regatta



**CHICAGO YACHT CLUB**

**A TRADITION OF YACHTING EXCELLENCE**

*Sailing Instructions*

*The Chicago Yacht Club*

**PRESENTS**

**THE 2012 VERVE CUP REGATTA**

**SAILING INSTRUCTIONS**

**AUGUST 10 – 12, 2012**

**Commodore:** Joseph S. Haas

**Vice Commodore:** Gerald F. Bober

**Rear Commodore:** Gregory Miarecki

**Chief Judge:** Nancy Glover

**Race Committee Chair:** Russ Burke

**Verve Cup Regatta Chairman**

Martin Sandoval

**Verve Cup Steering Committee**

Russ Burke	Mark Norris
Kyle Ewing	Linda Rosiek
Nancy Glover	Adrienne Rotfeld
David Finlay	Phil Rudolph
Robin Finlay	Martin Sandoval
Jessica Jamieson	Sam Veilleux
Melissa Lumkes	Jon Weglarz
Christopher McNicholas	Gerard Wolf

***Chicago Yacht Club and our sponsors encourage you to keep the waters  
we sail in clean for future generations.***

# GENERAL INFORMATION

1. Verve Cup Regatta headquarters are located at Chicago Yacht Club, Monroe Station, (312) 861-7777, [www.chicagoyachtclub.org](http://www.chicagoyachtclub.org), and will be open from 07:30 to 21:00 daily.
2. The legal drinking age in Illinois is 21. Minors will NOT be served and proof of age will be required. Intoxication or discourteous behavior may be grounds for expulsion from the event. **SKIPPERS AND OWNERS WILL BE HELD RESPONSIBLE FOR THE ACTIONS OF THEIR CREW. A BOAT IS SUBJECT TO IMMEDIATE DISQUALIFICATION IF ANY OF ITS UNDERAGE CREW IS FOUND TO BE ILLEGALLY CONSUMING ALCOHOL.**
3. Admission to ALL Verve Cup Regatta events will be open to all race participants and guests. **There are no social fees, tickets or other charges required to attend the onshore regatta events.**
4. Docking information: The following rules will be in force for the 2012 contestant yachts: No boat on the seawall or in a raft shall be left unattended for more than one hour. **Chicago Yacht Club dock attendants shall assign mooring arrangements. Please assist the Club attendants in their efforts.**  
Any boat seeking dockage at the Chicago Yacht Club must allow rafting as prescribed by the Dock Master. **NO EXCEPTIONS.**
5. The Verve Cup Regatta is made possible through corporate sponsorships. In consideration of that commitment, the only signage permitted at the shore site will be that associated with the event sponsorship. This includes flags, banners, promotions, etc. **PLEASE NOTE: Any commercial or editorial reference to this event must use the regatta's copyrighted name.**

## SCHEDULE OF EVENTS

**Registration:** Chicago Yacht Club, Monroe Station  
Thursday, August 9, 2012  
Between 12:00 hours and 19:00 hours

**COMPETITOR'S MEETING:**  
18:30 hours at Monroe Station, Thursday, August 9, 2012

**FIRST WARNING:** Circle A: Friday, 09:55; **Saturday, 10:25**; Sunday, 09:55  
Circle B: 09:55; Friday, Saturday and Sunday

**PARTIES:** At the conclusion of each day's racing.

**2012 Verve Cup Regatta  
August 10-12, 2012  
Chicago Yacht Club  
Monroe Harbor, Chicago, IL USA**

## **SAILING INSTRUCTIONS**

### **1 RULES**

- 1.1 The regatta will be governed by the rules as defined in *The Racing Rules of Sailing*.
- 1.2 The following US Sailing prescriptions will not apply: 60, 63.2, and 63.4.
- 1.3 The Offshore Rating Rule will apply for handicap sections.
- 1.4 The Local Rules of the Chicago T-10 Association will apply.

### **2 NOTICES TO COMPETITORS**

Notices to competitors will be posted on the official notice boards located at the Chicago Yacht Club Monroe Station. Information may also be available at Yacht Scoring ([www.yachtscoring.com](http://www.yachtscoring.com)).

### **3 CHANGES TO SAILING INSTRUCTIONS**

Any change to the sailing instructions will be posted before 0800 on the day it will take effect, except that any change to the schedule of races will be posted by 2000 on the day before it will take effect.

### **4 SIGNALS MADE ASHORE**

- 4.1 Signals made ashore will be displayed from the main flagpole located northeast of the center of the Monroe Station clubhouse.
- 4.2 When flag AP is displayed ashore, '1 minute' is replaced with 'not less than 75 minutes' in the race signal AP.

### **5 SCHEDULE OF RACES**

#### **5.1 Friday, August 10**

0955 First warning (all circles)

#### **Saturday, August 11**

0955 First warning (Racing Area B)

1025 First warning (Racing Area A)

#### **Sunday, August 12**

0955 First warning (all circles)

1400 No warning after this time

- 5.2 If the race committee intends to start another race on the same day, it will display the Second Substitute (with no sound) while boats are finishing.

### **6 CLASS FLAGS**

- 6.1 Section breaks, section flags, and initial starting order will be distributed at registration.
- 6.2 Each boat shall fly her section flag on her backstay. Boats without a permanent backstay shall attach the flag to the upper aft rail starboard of center.

### **7 RACING AREAS**

The diagram contained in Addendum A provides the approximate starting location for each division. The starting areas are as follows:

Racing Area A Approximately 5.1 nautical miles at a heading of 040° from the inner Monroe Harbor entrance. The approximate coordinates are 41° 56' North and 87° 32' West.

Racing Area B Approximately 4.5 nautical miles at a heading of 082° from the inner Monroe Harbor entrance. The approximate coordinates are 41° 53' North and 87° 30' West.

## **8 THE COURSES**

- 8.1 The diagrams in Addendum A show the courses, the order in which marks are to be passed, and the side on which each mark is to be left.
- 8.2 No later than the warning signal, the race committee signal boat will display the course, the approximate compass bearing, and the distance of the first leg.
- 8.3 Mark 1 will have an offset. In the event that the offset is not in place, the single windward Mark 1 shall be left to port. Mark 2 will be a gate. In the event that the gate is not in place, the single leeward Mark 2 shall be left to port.
- 8.4 Offset marks will not be set for a change of course.

## **9 MARKS**

- 9.1 Marks 1, 2, and G will be orange inflatable marks.
- 9.2 New marks, as provided in instruction 12, will be yellow. When in a subsequent change of course a new mark will be replaced, it will be replaced with an original mark.
- 9.3 The starting mark will be green, except that the starting mark for the Tartan 10 section will be yellow.
- 9.4 The finishing mark for upwind finishes will be the active long course weather mark. The finishing mark for downwind finishes will be white.

## **10 AREAS THAT ARE OBSTRUCTIONS**

The following areas are designated as obstructions: areas restricted by the U.S. government. Refer to the most recent Local Notice To Mariners.

## **11 THE START**

- 11.1 The starting line will be between a staff displaying an orange flag on the signal boat at the starboard end and the course side of the port-end starting mark.
- 11.2 Boats whose warning signal has not been made shall avoid the starting area during the starting sequence for other races.
- 11.3 A boat starting later than four minutes after her starting signal will be scored Did Not Start without a hearing. This changes rules A4 and A5.
- 11.4 If any part of a boat's hull, crew or equipment is on the course side of the starting line at her starting signal and she is identified, the race committee will attempt to broadcast her sail number on the designated hailing channel.
- 11.5 The race committee may combine sections for a start.

## **12 CHANGE OF THE NEXT LEG OF THE COURSE**

- 12.1 To change the next leg of the course, the race committee will lay a new mark (or move the finishing line) and remove the original mark as soon as practicable. When in a subsequent change a new mark is replaced, it will be replaced by an original mark.

- 12.2 A course change of 5 degrees or less may not be signaled by the race committee. The course change will continue to use the active mark. This changes rule 33(a).

### **13 THE FINISH**

The finishing line will be between a staff displaying a blue flag on a race committee boat and the course side of the finishing mark to be left to port.

### **14 PENALTY SYSTEM**

For the Farr 40 class, rule 44.1 is changed so that the Two-Turns Penalty is replaced by the One-Turn Penalty when a boat breaks a rule of Part 2 outside the Zone of a rounding mark or of a finishing mark.

### **15 TIME LIMITS AND TARGET TIMES**

The time limit will be two and one-half hours. Boats failing to finish within one-half hour after the first boat sails the course (time adjusted in ORR sections) and finishes will be scored Time Limit Expired without a hearing. This changes rules 35, A4 and A5.

### **16 PROTESTS AND REQUESTS FOR REDRESS**

- 16.1 Protests and requests for redress or reopening shall be delivered to the protest desk at Monroe Station within the appropriate time limit.

- 16.2 A boat's protest time limit is 60 minutes from the docking time of the race committee boat that finished her.

- 16.3 On the last scheduled day of racing a request for reopening a hearing shall be delivered

- (a) within the protest time limit if the requesting party was informed of the decision on the previous day;
- (b) no later than 30 minutes after the requesting party was informed of the decision on that day.

This changes rules 62.2 and 66.

- 16.4 On the last scheduled day of racing a request for redress based on a protest committee decision shall be delivered no later than 30 minutes after the decision was posted. This changes rule 62.2.

### **17 PROTEST ARBITRATION**

- 17.1 An arbitration hearing may be held prior to the protest hearing for protests involving a rule Part 2.

- 17.2 After a protest form is delivered, and if an arbitration hearing is to be conducted, one designated representative (conforming to rule 63.3(a)) of each party will appear before an arbitrator. No witnesses are permitted.

- 17.3 After hearing the testimony of each representative, the arbitrator will reach one of the following conclusions. 1) There was no breach of a rule. If the representatives agree, the protest is withdrawn and cannot be reopened. If any representative disagrees, the matter goes to the protest committee for a hearing. 2) There was a breach of a rule by at least one of the boats involved. The representative(s) of the offending boat(s) have the option of accepting a 40% alternative penalty (as described in rule 44.3(c)) or submitting the matter to the protest committee for a hearing. If the penalty is accepted, the matter cannot be reopened or made the subject of a redress request. 3) The matter should go to the protest committee for a hearing.

- 17.4 When the protest is referred to the protest committee, the arbitrator will not be a member of the protest committee hearing the protest.
- 17.5 Instruction 17 changes rules 60.1(b), 63.1, 63.6, and 66.

## **18 SCORING**

- 18.1 A boat's score will be the total of her race scores. This changes rule A2.
- 18.2 One completed race constitutes a regatta.
- 18.3 ORR scoring shall be in accordance with the ORR handicap certificate in effect on August 3, 2012. ORR scoring will be calculated using time-on-time (TOT) scoring utilizing the ORR 50% windward/50% leeward rating for downwind finishes and the 60% windward/40% leeward rating for upwind finishes.
- 18.4 A boat scored TLE will receive points equal to the number of finishers in her section plus two points. This changes rules A4.2 and A5.

## **19 SAFETY REGULATIONS AND WITHDRAWALS**

A boat that retires from a race shall notify the race committee as soon as possible. A boat may notify the race committee using the designated VHF hailing channel.

## **20 ADVERTISING**

Boats may be required to display advertising, including removable adhesive stickers, chosen and supplied by the organizing authority.

## **21 SUPPORT BOATS**

Team leaders, coaches and other support personnel shall stay outside areas where boats are racing from the time of the preparatory signal for the first class to start until all boats have finished or retired or the race committee signals a postponement, general recall or abandonment.

## **22 RADIO COMMUNICATION**

Except in an emergency, a boat shall neither make radio transmissions while racing nor receive radio communications not available to all boats. This restriction also applies to communication technologies.

## **23 COURTESY BROADCASTS**

- 23.1 The courtesy VHF broadcast channels will be as follows:
  - Racing Area A CH 78
  - Racing Area B CH 73
- 23.2 A boat shall not request redress for errors or omissions in courtesy broadcasts. This changes rule 62.1(a).

## **24 PRIZES**

- 24.1 Prizes will be awarded by section to:
  - The boats with the best three scores when 15 boats or fewer sail in a section.
  - The boats with the best four scores when 16 to 25 boats sail in a section.
  - The boats with the best five scores when 26 boats or more sail in a section.
- 24.2 The Verve Cup will be awarded to the offshore boat whose section featured the closest, most competitive racing throughout the regatta.

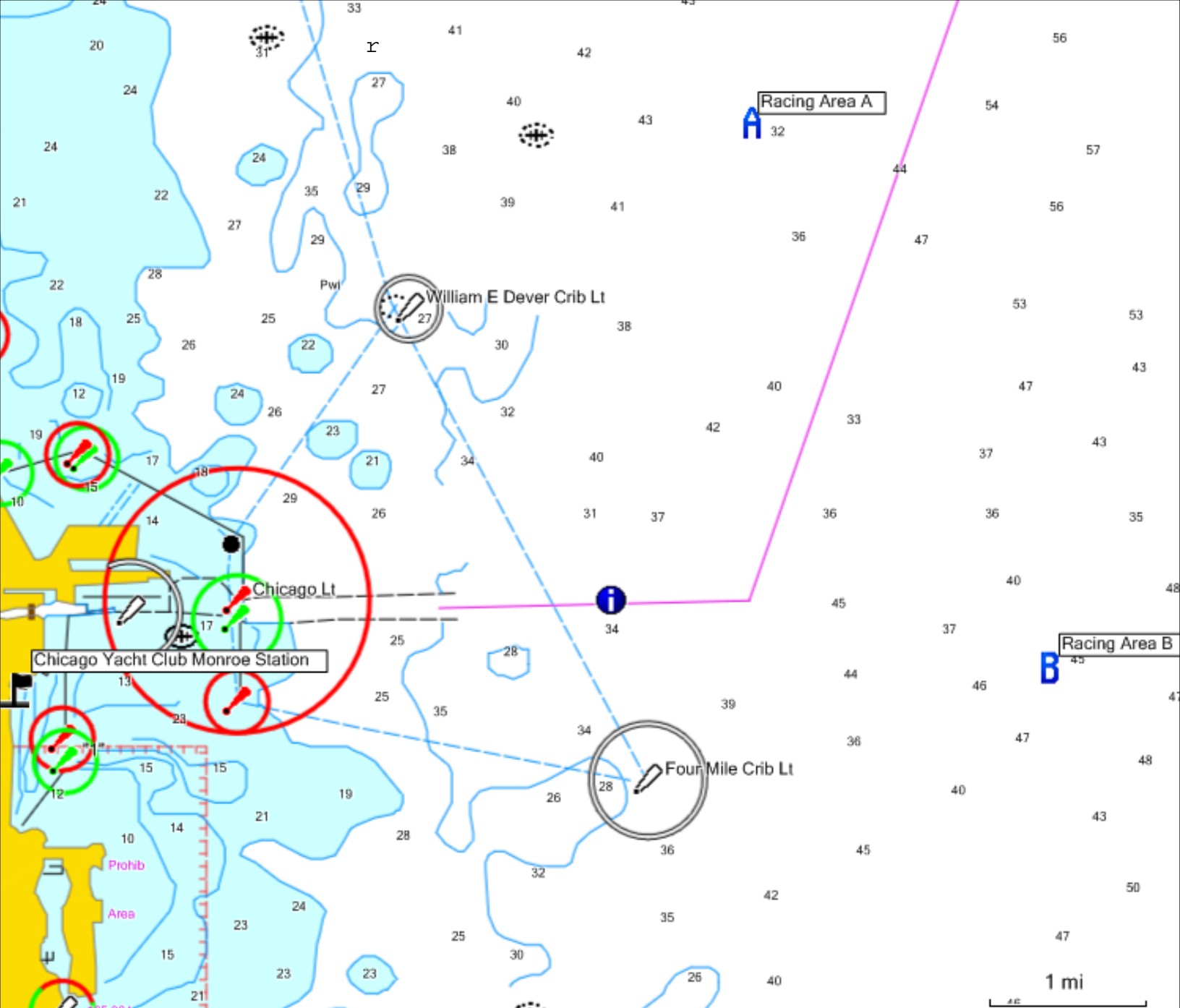
**25    DISCLAIMER OF LIABILITY**

Competitors participate in the regatta entirely at their own risk. See rule 4, Decision to Race. The organizing authority will not accept any liability for material damage or personal injury or death sustained in conjunction with or prior to, during, or after the regatta.

**26    INSURANCE**

Each participating boat shall be insured with valid third-party liability insurance with a minimum cover of \$300,000 per event or the equivalent.



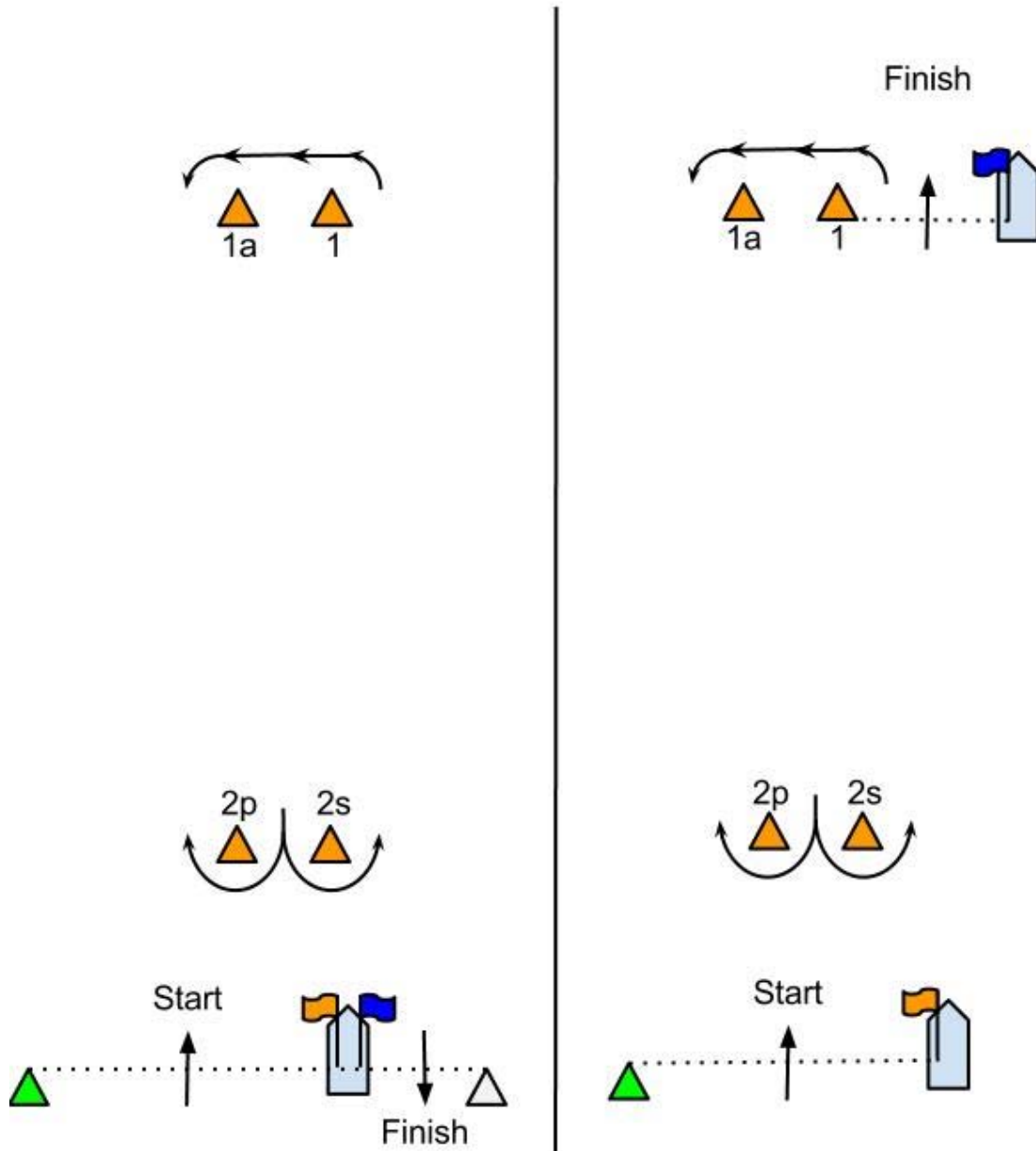


RACE COURSE DIAGRAM

# RACE COURSES

## ILLUSTRATION B

Shown here are diagrams of course shapes. The boat's track is represented by a discontinuous line so that each diagram can describe courses with different numbers of laps. If more than one course may be used for a class, state how each particular course will be signaled.



Course 3	Course 5	Course 4	Course 6
"3" (three legs): The marks shall be rounded in the order of 1, 1A, 2, finish.	"5" (five legs): The marks shall be rounded in the order of 1, 1A, 2, 1, 1A, 2, finish.	"4" (four legs): The marks shall be rounded in the order of 1, 1A, 2, 1, 1A finish.	"6" (six legs): The marks shall be rounded in the order of 1, 1A, 2, 1, 1A, 2, 1, 1A, finish.

# 2012 Verve Cup Schedule of Events

## THURSDAY, AUGUST 9

12:00 p.m. – 7:00 p.m.

6:30 p.m.

Registration, Commodore Room, CYC Monroe Station

Skipper's Meeting, Regatta Tent, CYC Monroe Station, featuring weather presentation by Chris Bedford of Sailing Weather Services

### **REMINDERS:**

- *Order Box Lunches – Forms available at Registration*
- *Stay for the Pasta Bar in the CYC Main Dining Room – All skippers and crew are welcome*
- *CYC Main Dining Room Reservations are available for crew dinners*

## FRIDAY, AUGUST 10

7:30 a.m. – 9:30 a.m.

7:30 a.m. – 9:30 a.m.

7:30 a.m. – 9:30 a.m.

8:00 a.m.

8:30 a.m.

9:55 a.m. – 4:00 p.m.

11:30 a.m. – 3:00 p.m.

3:30 p.m. – 5:30 p.m.

+/-5:30 p.m. – 8:30 p.m.

5:30 p.m. – 8:30 p.m.

Hospitality Desk open

Box Lunch pickup at CYC Monroe Lobby

Continental breakfast available on the CYC Monroe Patio

Competitor Weather Briefing by Chris Bedford of Sailing Weather Services

Harbor Start

Racing (approximate times)

Regular Lunch Menu

Hospitality Desk open

Sponsored Competitor Party in the Tent Presented by Karma Yacht Sales

Music by "System 80"

Casual Grill available in parking lot, CYC Main Dining Room available for crew dinners

### **REMINDERS:**

- *Visit the SLAM booth to purchase regatta merchandise*
- *Visit the Audi auto display*
- *Visit the Regatta Village with booths from Equinox Fitness and Chicago Yacht Yard*

## SATURDAY, AUGUST 11

7:30 a.m. – 9:30 a.m.

7:30 a.m. – 9:30 a.m.

7:30 a.m. – 9:30 a.m.

8:00 a.m.

8:30 a.m.

9:55 a.m. – 4:00 p.m.

11:30 a.m. – 3:00 p.m.

3:30 p.m. – 5:30 p.m.

+/-5:30 p.m. – 8:30 p.m.

5:30 p.m. – 8:30 p.m.

Hospitality Desk open

Box Lunch pickup at CYC Monroe Lobby

Continental breakfast available on the CYC Monroe Patio

Competitor Weather Briefing by Chris Bedford of Sailing Weather Services

Harbor Start

Racing (approximate times)

Regular Lunch Menu

Hospitality Desk open

Sponsored Competitor Party in the Tent Presented by Heineken and Mount Gay Rum

Music by "Parrot Troopers"

Casual Grill available in parking lot, CYC Main Dining Room available for crew dinners

### **REMINDERS:**

- *Visit the SLAM booth to purchase regatta merchandise*
- *Visit the Audi auto display*

## SUNDAY, AUGUST 12

7:30 a.m. – 9:30 a.m.

7:30 a.m. – 9:30 a.m.

7:30 a.m. – 10:00 a.m.

8:00 a.m.

8:30 a.m.

9:55 a.m. – 2:00 p.m.

2:00 p.m. – 5:00 p.m.

4:00 p.m.

4:00 p.m. – 5:00 p.m.

3:00 p.m. – 8:00 p.m.

Hospitality Desk open

Box Lunch pickup at CYC Monroe Lobby

Continental breakfast available on the CYC Monroe Patio

Competitor Weather Briefing by Chris Bedford of Sailing Weather Services

Harbor Start

Racing (approximate times)

Sponsored Competitor Party in the Tent Presented by Heineken and Mount Gay Rum

Music by "Matt Burke Band"

Awards Presentation (pending protests)

Hospitality Desk open for shirt size exchange

Lakeside Chill and Grill available on the CYC Monroe Patio

# The Chicago Yacht Club Presents:



**Co-Sponsors of the Verve Cup Regatta**



**Audi**



**2012 Event Sponsors and Suppliers:**

*Chicago Yacht Yard*

*Equinox*

*Heineken*

*Karma Yacht Sales*

*Mount Gay Rum*

*UK Halsey Sailmakers*

*West Marine*

**Thank you to Sailing Weather Services for supporting onshore activities and entertainment for the 2012 Verve Cup Regatta.**